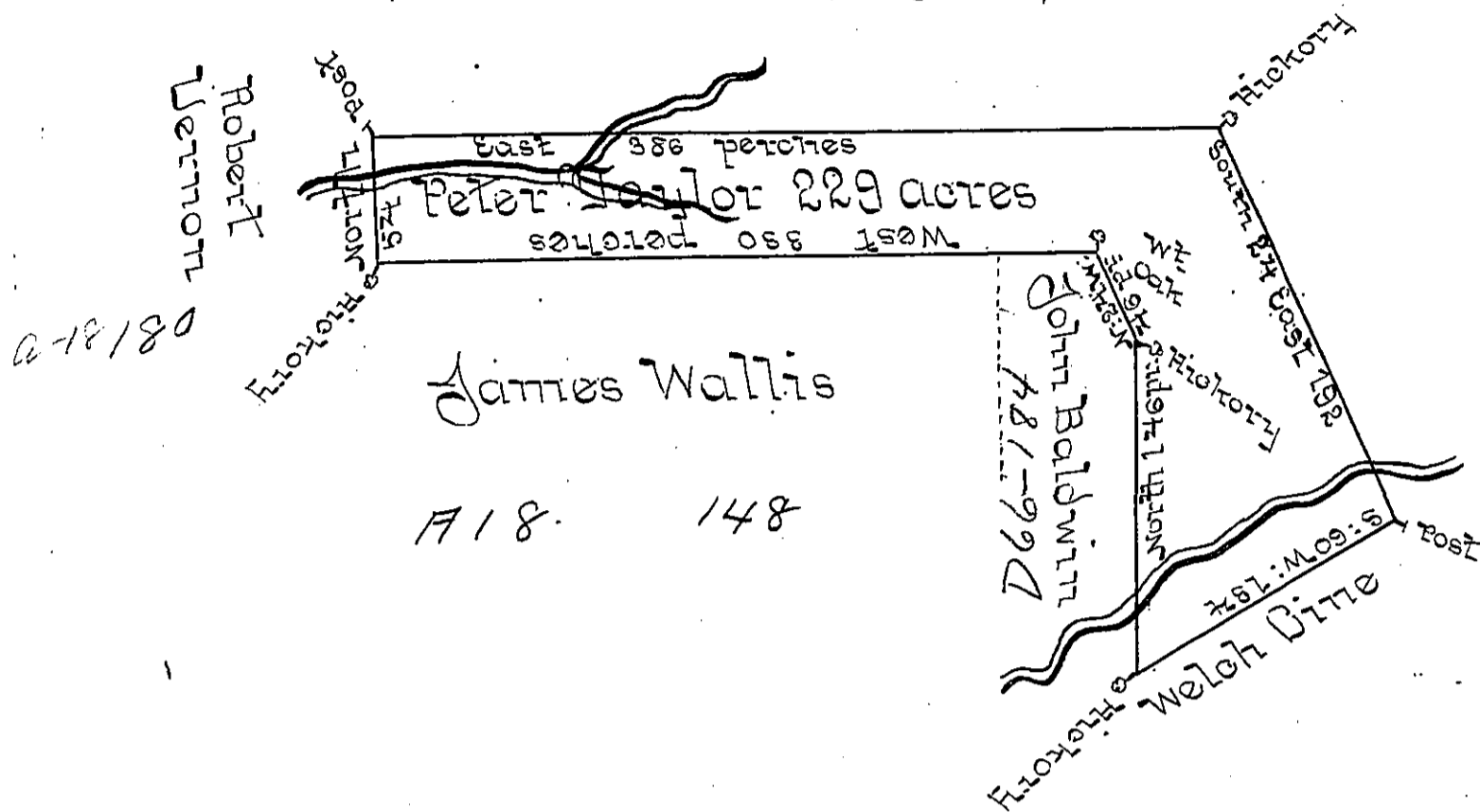


Page 144  
John Parker



in The Township of Caln  
 Situate in the County of Chester between the North  
 Branch of Brandywine Creek and the Welch Tract sur-  
 veyed to the sd Peter Taylor the 2<sup>d</sup> Day of 10<sup>br</sup> 1702  
 by Virtue of a Warrant from Edward Pennington Sur-  
 veyor General to me directed Dated the 16<sup>th</sup> of 10<sup>br</sup> 1702  
 for 265 acres and by an order from the Secretary dated  
 17<sup>th</sup> of 6<sup>th</sup> mo 1702 I deducted 30 ~~acres~~ acres from the  
 sd 265 acres therefore the above tract of Land contain-  
 eth 229 acres

by Me Isaac Taylor

IN TESTIMONY that the above is a copy of the original remaining on file in the  
 Department of Internal Affairs of Pennsylvania, made con-  
 formably to an Act of Assembly approved the 16th day of  
 February, 1833, I have hereunto set my Hand and caused  
 the Seal of said Department to be affixed at Harrisburg, this  
 seventh day of September 1897

*James W. Latta*  
 Secretary of Internal Affairs.